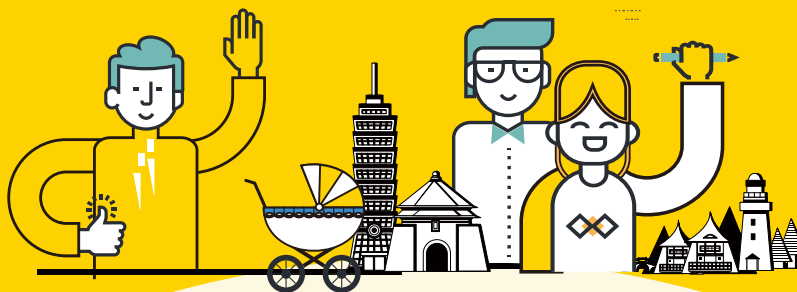


Citizens must have established household registration for 6 months in Taiwan

or

Non-Citizens have a full 6 months of residence in Taiwan ※1



All the rights you need to know



衛生福利部中央健康保險署
National Health Insurance Administration,
Ministry of Health and Welfare

Tips for enrolling the National Health Insurance

The National Health Insurance(NHI) program is a compulsory social insurance program. According to NHI regulations, Taiwanese citizens with household registrations and foreign nationals living in Taiwan with an Alien Resident Certificate (ARC) must enroll in the NHI program.

Citizens



Taiwanese citizens with 'household registrations' must enroll in the NHI program

Non-Citizens



Foreign nationals living in Taiwan with an 'Alien Resident Certificate (ARC)' must join enroll in the NHI program

People with a regular employer apply to enroll in the NHI program **from the date of employment**.

People with a regular employer apply to enroll in the NHI program **from the date of employment**.

1. For those who have no particular employers but be a member of occupational union: **they should enroll** in the NHI program **through their occupational union farmers' or fishermen's association**.

2. None of the above should enroll in the NHI program as a dependent through their spouses or direct blood relatives. Otherwise they should enroll in the NHI program at their local administrative office.

3. **Non-employed persons who have returned from abroad to restore their household registrations or newly established household registrations:**

(1)Those who have a record of participating in the NHI program within the last 2 years can enroll in the NHI program from the day when their household registration is restored.

(2)Those who did not have the NHI enrollment record for the past 2 years need to wait for a period of 6 months to enroll in the NHI program after they restored household registration.

1.Those who have **had a full 6 months of residence** (※1) in Taiwan should enroll in NHI program.

(1)For those who are members of occupational union, or workers engaged in agricultural or fishery activities, should enroll in the NHI program **through occupational unions, farmers' or fishermen's association**.

(2)For those who are not employed or not a member of occupational union: they should enroll in the NHI program **through their spouses or direct blood relatives**. None of the above should enroll in the NHI program **through their local administrative office**.

(3)Foreign students should apply to enroll in the program **through their schools**.

2. **Those who are applied to the Act for the Recruitment and Employment of Foreign Professionals §21 are not subject to the restriction of a full 6 months residence in Taiwan:**

(1)Foreign professionals who are employed, and their spouses, minor children, or their mentally or physically challenged adult children.

(2)Foreign special professionals and foreign senior professionals who are employed, employers or self-employed business owners, and their spouses, minor children, or their mentally or physically challenged adult children.

Newborns who are **born in Taiwan** shall enroll in the NHI program as the dependent of their mother or father from the date of birth.

Foreign newborns who are **born in Taiwan** and obtain an **ARC** shall enroll in the NHI program from the date of birth.

※1: 6 months of residence: 6 months of continuous residence in Taiwan or with one trip abroad not exceeding 30 days when the actual residency period of 6 months is reached after the days abroad have been deducted.

※2: In the event of any doubt between this English translation, the original Mandarin version shall prevail.